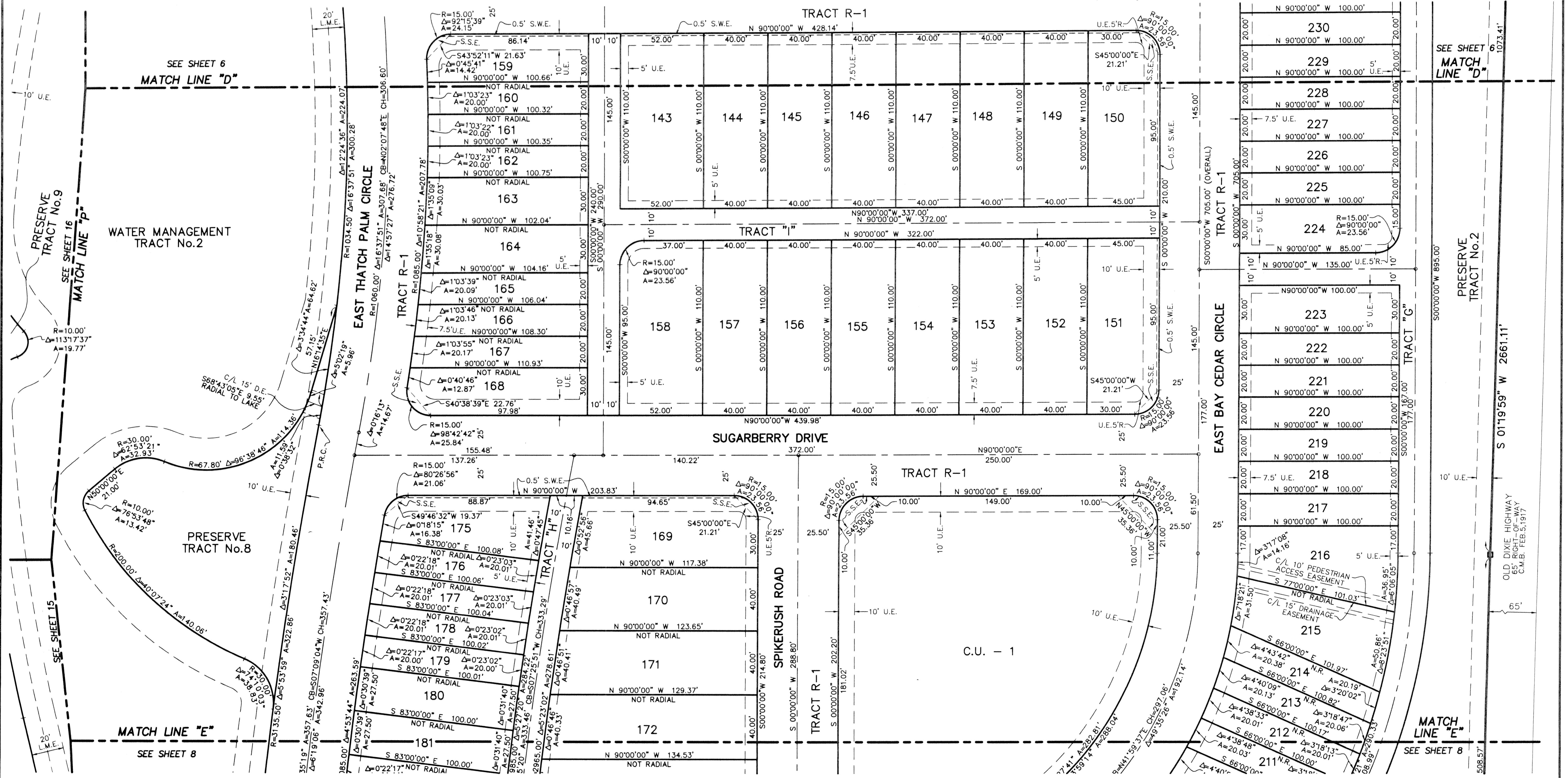
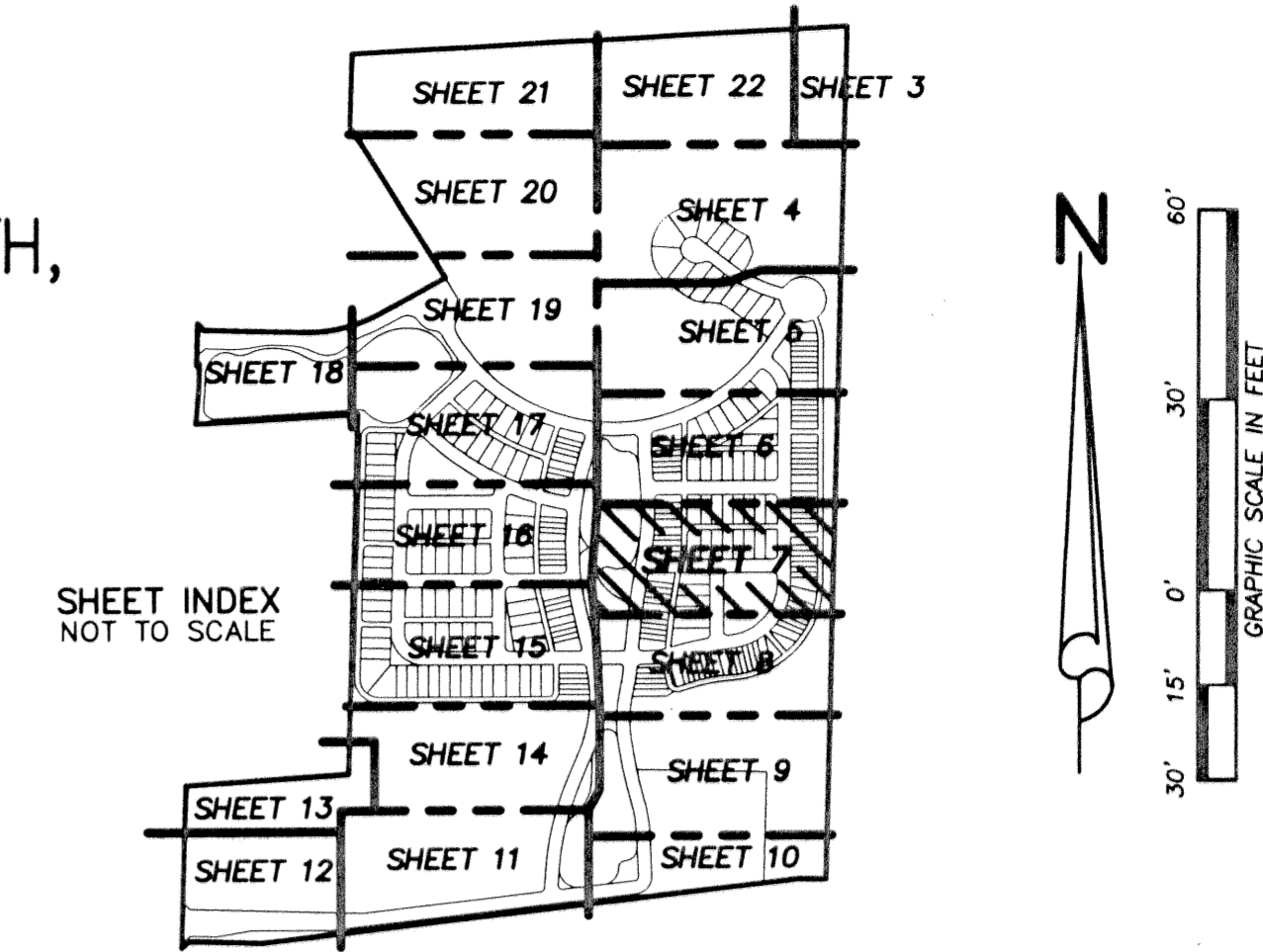


BOTANICA

BEING A PARCEL OF LAND IN SECTION 12 AND 13, TOWNSHIP 41 SOUTH,
RANGE 42 EAST, TOWN OF JUPITER, PALM BEACH COUNTY, FLORIDA.

JANUARY, 2003 SHEET 7 OF 22

34



LIDBERG LAND SURVEYING, INC.
 675 West Indiantown Road, Suite 200,
 Jupiter, Florida 33458 TEL. 561-746-8454

CAD	K:\AUTOCAD\98-150\1508-306.DWG			
REF	K:\AUTOCAD\			
FLD	B.D.	FB. 000	PG. 00	JOB 98-150-306
OFF	W.D.J.	000	00	DATE 02-22-02
CKD	W.D.J.	SHEET 7 OF 22	DWG	D98-150P